



Blower Motor Resistor

BUYER'S GUIDE

11/09/10

Blower Motor Resistor

Blower Motor Resistor			Blower Motor Resistor		
BMR1	2004-98	CHRYSLER: 300M, CONCORDE, INTREPID, LHS - DODGE : INTREPID	BMR21 Cont.	2007-99	SILVERADO 3500, SILVERADO 3500 HD, SUBURBAN 1500, SUBURBAN 2500, TAHOE - GMC : C3500 PICKUP, JIMMY, SIERRA 1500, SIERRA 1500 HD, SIERRA 2500, SIERRA 2500 HD, SIERRA 3500, SIERRA C3, SIERRA DENALI, YUKON, YUKON DENALI, YUKON DENALI XL, YUKON XL 1500, YUKON XL 2500
BMR2	2001-97	JEEP : CHEROKEE, WRANGLER	BMR22	2004-95	NISSAN : FRONTIER, SENTRA, XTERRA
BMR3	2005-97	BUICK: CENTURY, LACROSSE, REGAL - CHEVROLET: CORVETTE, IMPALA, MONTE CARLO, VENTURE - OLDSMOBILE: INTRIGUE, SILHOUETTE - PONTIAC : GRAND PRIX, MONTANA, TRANS SPORT	BMR23	2007-96	CHEVROLET: EXPRESS 1500/ G1500 Van, EXPRESS 2500/ G2500 Van, EXPRESS 3500/ G3500 Van, G30 VAN - GMC : G35/G3500 VAN, SAVANA 1500, SAVANA 2500, SAVANA 3500
BMR4	2008-93	DODGE: RAM 1500 PICKUP, RAM 2500 PICKUP, RAM 3500 PICKUP - JEEP : GRAND CHEROKEE	BMR24	1999-92	BUICK: LESABRE, PARK AVENUE, RIVIERA - CADILLAC: ALLANTE, BROUGHAM, DEVILLE, ELDORADO, FLEETWOOD, SEVILLE - OLDSMOBILE: 88 - PONTIAC : BONNEVILLE
BMR5	2005-92	CHEVROLET: CLASSIC, MALIBU - OLDSMOBILE: ACHIEVA, ALERO, CUTLASS - PONTIAC : GRAND AM	BMR25	2006-94	FORD: ESCAPE, EXPEDITION, F-150 PICKUP, F-250 PICKUP, F-250 SUPER DUTY PICKUP, F-350 PICKUP, F-350 SUPER DUTY PICKUP, F53 STRIPPED CHASSIS, MUSTANG - LINCOLN: NAVIGATOR - MAZDA : TRIBUTE
BMR6	2002-95	CHEVROLET: CAVALIER - PONTIAC : SUNFIRE	BMR26	2007-96	FORD: TAURUS - MERCURY : SABLE, VILLAGER
BMR7	2001-95	CHEVROLET: C1500 PICKUP, C1500 SUBURBAN, C2500 PICKUP, C2500 SUBURBAN, C3500 PICKUP, K1500 PICKUP, K1500 SUBURBAN, K2500 PICKUP, K2500 SUBURBAN, K3500 PICKUP, TAHOE - GMC : C1500 PICKUP, C1500 SUBURBAN, C2500 PICKUP, C2500 SUBURBAN, C3500 PICKUP, K1500 PICKUP, K1500 SUBURBAN, K2500 PICKUP, K2500 SUBURBAN, K3500 PICKUP, YUKON, YUKON DENALI, YUKON XL 1500, YUKON XL 2500	BMR27	2000-96	CHRYSLER: GRAND VOYAGER, TOWN & COUNTRY, VOYAGER - DODGE: CARAVAN, GRAND CARAVAN - PLYMOUTH : GRAND VOYAGER, VOYAGER
BMR8	2003-96	DODGE : B1500 VAN, B2500 VAN, B3500 VAN, RAM 1500 VAN, RAM 2500 VAN, RAM 3500 VAN	BMR28	1994-88	CHEVROLET: BLAZER, C1500 PICKUP, C1500 SUBURBAN, C2500 PICKUP, C2500 SUBURBAN, C3500 PICKUP, K1500 PICKUP, K1500 SUBURBAN, K2500 PICKUP, K2500 SUBURBAN, K3500 PICKUP - GMC : C1500 PICKUP, C1500 SUBURBAN, C2500 PICKUP, C2500 SUBURBAN, C3500 PICKUP, JIMMY, K1500 PICKUP, K1500 SUBURBAN, K2500 PICKUP, K2500 SUBURBAN, K3500 PICKUP, YUKON
BMR9	1999-93	NISSAN : ALTIMA, MAXIMA	BMR29	1994-76	BUICK: CENTURY, ELECTRA, LESABRE, REGAL, RIVIERA, SKYHAWK, SKYLARK, SOMERSET - CADILLAC: CIMARRON - CHEVROLET: CAMARO, CAPRICE, CELEBRITY, CITATION, CORVETTE, EL CAMINO, G10 VAN, G20 VAN, G30 VAN, IMPALA, MALIBU, MONTE CARLO, P30 VAN, S10 BLAZER, S10 PICKUP - GMC: CABALLERO, G15/G1500 VAN, G25/G2500 VAN, G35/G3500 VAN, P35/P3500 VAN, S15 JIMMY, S15 PICKUP, SONOMA, SYCLONE, TYPHOON - OLDSMOBILE: 98, CALAIS, CUSTOM CRUISER, CUTLASS, CUTLASS CALAIS, CUTLASS CIERA, CUTLASS SUPREME, DELTA 88, FIRENZA, OMEGA - PONTIAC : 6000, BONNEVILLE, CATALINA, FIERO, FIREBIRD, GRAND AM, GRAND LEMANS, GRAND PRIX, J2000, LEMANS, PARISIENNE, PHOENIX, SAFARI, SUNBIRD, TEMPEST
BMR10	2010-83	FORD: AEROSTAR, BRONCO, BRONCO II, E SUPER DUTY, E-150 ECONOLINE, E-250 ECONOLINE, E-350 ECONOLINE, EXPLORER, F-150 PICKUP, F-250 PICKUP, F-350 PICKUP, F-450 SUPER DUTY PICKUP, F53 STRIPPED CHASSIS, F59 STRIPPED CHASSIS, RANGER, WINDSTAR - MAZDA : B2300, B3000, B4000, NAVAJO	BMR30	2005-91	CHEVROLET: BLAZER, C1500 SUBURBAN, C2500 SUBURBAN, K1500 SUBURBAN, K2500 SUBURBAN, S10 PICKUP - GMC: JIMMY, SONOMA - OLDSMOBILE : BRAVADA
BMR11	2000-95	CHRYSLER: CIRRUS, SEBRING - DODGE: STRATUS - PLYMOUTH : BREEZE			
BMR12	2001-88	BUICK: REGAL - CHEVROLET: LUMINA, MONTE CARLO - OLDSMOBILE: CUTLASS, CUTLASS SUPREME - PONTIAC : GRAND PRIX			
BMR13	1993-86	MAZDA : B2000, B2200, B2600			
BMR14	2007-99	CADILLAC: ESCALADE - CHEVROLET: AVALANCHE, C3500 PICKUP, SILVERADO 1500, SILVERADO 1500 HD, SILVERADO 2500, SILVERADO 2500 HD, SILVERADO 3500, SILVERADO 3500 HD, SUBURBAN 1500, SUBURBAN 2500, TAHOE - GMC : C3500 PICKUP, JIMMY, SIERRA 1500, SIERRA 1500 HD, SIERRA 2500, SIERRA 2500 HD, SIERRA 3500, SIERRA DENALI, YUKON, YUKON DENALI, YUKON DENALI XL, YUKON XL 1500, YUKON XL 2500			
BMR15	1996-82	JEEP : CHEROKEE, COMANCHE, GRAND WAGONEER, WAGONEER			
BMR16	2004-01	CHRYSLER: SEBRING - DODGE : STRATUS			
BMR17	2009-02	BUICK: RAINIER - CHEVROLET: SSR, TRAILBLAZER - GMC: ENVOY - ISUZU: ASCENDER - OLDSMOBILE : BRAVADA			
BMR18	2009-95	FORD: EXPLORER, RANGER - MERCURY : MOUNTAINEER			
BMR19	2007-01	CHRYSLER: ASPEN - DODGE : DAKOTA, DURANGO			
BMR20	2007-01	CHRYSLER: PACIFICA, TOWN & COUNTRY, VOYAGER - DODGE : CARAVAN, GRAND CARAVAN			
BMR21	2007-99	CADILLAC: ESCALADE - CHEVROLET: AVALANCHE, C1500 SUBURBAN, C2500 SUBURBAN, C3500 PICKUP, K1500 SUBURBAN, K2500 SUBURBAN, SILVERADO 1500, SILVERADO 1500 HD, SILVERADO 2500, SILVERADO 2500 HD,			

Illustration Guide



BMR1-1



BMR1-2



BMR1-3



BMR2-1



BMR2-2



BMR2-3



BMR3-1



BMR3-2



BMR3-3



BMR3-4



BMR4-1



BMR4-2



BMR4-3



BMR5-1



BMR5-2



BMR5-3



BMR6-1



BMR6-2



BMR6-3



BMR7-1



BMR7-2



BMR8-1



BMR8-2



BMR8-3



BMR8-4



BMR9-1



BMR9-2



BMR9-3



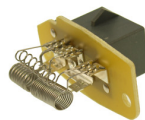
BMR9-4



BMR10-1



BMR10-2



BMR10-3

Illustration Guide



BMR10-4



BMR11-1



BMR11-2



BMR11-3



BMR12-1



BMR12-2



BMR12-3



BMR13-1



BMR13-2



BMR13-3



BMR14-1



BMR14-2



BMR14-3



BMR15-1



BMR15-2



BMR15-3



BMR15-4



BMR16-1



BMR16-2



BMR16-3



BMR16-4



BMR17-1



BMR17-2



BMR17-3



BMR18-1



BMR18-2



BMR18-3



BMR18-4



BMR19-1



BMR19-2



BMR19-3



BMR19-4

Illustration Guide



BMR20-1



BMR20-2



BMR20-3



BMR20-4



BMR20-5



BMR21-1



BMR21-2



BMR21-3



BMR21-4



BMR22-1



BMR22-2



BMR22-3



BMR22-4



BMR23-1



BMR23-2



BMR23-3



BMR24-1



BMR24-2



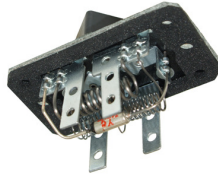
BMR24-3



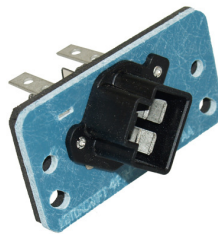
BMR25-1



BMR25-2



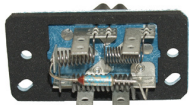
BMR25-3



BMR26-1



BMR26-2



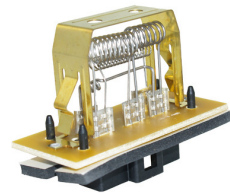
BMR26-3



BMR27-1



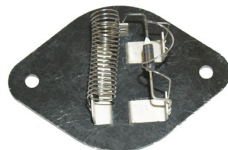
BMR27-2



BMR27-3



BMR28-1



BMR28-2



BMR29-1

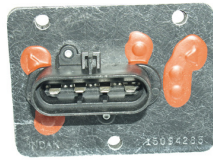


BMR29-2

Illustration Guide



BMR30-1



BMR30-2



BMR30-3